



Industrial Valve



MAFFS VALVES & FITTINGS PVT LTD

Manufacturer of Industrial Valves, Instrumentation Valves & Fittings



OUR FOCUS

ABOUT US

In continuation to our legacy journey as a customer centric company **"Expert Engineering"** which started in 2001, we are now delighted to expand our business portfolio to Industrial and Instrumentation Valves & fittings under the name of **"Maffs Valves & Fittings Private Limited"**.

Maffs Valves & Fittings is an Indian based Valve Manufacturing & Service company for the process, power and energy industries across the globe.

We have state of the art manufacturing facility to produce high quality valves and fittings to meet specific needs of the customers. This modern facility is supported by a specialized team of highly skilled staff who ensures of the quality and customer needs are met by complying to International standards.

We are involved in the Design, Manufacturing, Testing, Servicing and Supply of Industrial Valves and Instrumentation Valves & Fittings. We work with the highest consideration for the health & safety of our people and minimize the environmental risk.

Maffs Valves & Fittings is accredited and complies with the Quality Management System ISO 9001:2015.

Commitment

Quality

Safety

Customer
Delight





VALUES

Integrity | Commitment | Customer Focus
Building Relationships | Teamwork.

MISSION

Our mission is to provide specialized products & services to our clients with delivery commitments to achieve customer delight.

VISION

Be a global leader in providing specialized products and services in flow control business with commitment in providing the best possible quality, cost & delivery.

CODE OF CONDUCT

The Code of Conduct outlines Maffs commitments and requirements regarding business practices and personal conduct.

QUALITY POLICY

Our policy is to continuously improve customer satisfaction by supplying high quality products as committed in compliance with the requirements of our Quality Management System.

Our objectives are :

- Improve customer satisfaction.
- Reduce customer complaints.
- Improve on-time delivery.
- Improve delivery lead times.
- Successful completion of audits.

Product Range

Industrial Valves



Valve Type	Design Standard	150 #	300 #	600 #	800 #	900 #	1500 #	2500 #
Ball Valve - Trunnion	API 6D, ISO 17292	2" to 48"	2" to 48"	2" to 48"	-	2" to 24"	2" to 24"	2" to 12"
Ball Valves - Floating	API 6D, ISO 17292	½" to 6"	½" to 6"	½" to 6"	½" to 2"	½" to 2"	½" to 2"	½" to 2"
Forged GGC Valve	ASME B16.34, API 602	½" to 2"	½" to 2"	½" to 2"	½" to 2"	½" to 2"	½" to 2"	½" to 2"
Gate Valve	API 600, API 6D	2" to 36"	2" to 36"	2" to 36"	-	2" to 24"	2" to 24"	2" to 12"
Globe Valve	API 623, BS 1873	2" to 16"	2" to 16"	2" to 16"	-	2" to 12"	2" to 12"	2" to 12"
Swing Check Valve	API 594, BS 1868	2" to 24"	2" to 24"	2" to 24"	-	2" to 12"	2" to 12"	2" to 12"
Dual Plate Check Valve	API 594	2" to 48"	2" to 24"	2" to 20"	-	2" to 16"	2" to 12"	-
Butterfly Valve	API 609	2" to 36"	2" to 36"	2" to 36"	-	2" to 24"	2" to 16"	-
Plug Valve	API 599, API D	2" to 24"	2" to 24"	2" to 16"	-	-	-	-
Piston Valve	ASME B16.34, API 602	½" to 8"	½" to 8"	-	½" to 2"	-	-	-
Knife Edge Gate Valve	ASME 16.34, MSS SP 81	2" to 48"	2" to 24"	-	-	-	-	-
Strainer	ASME 16.34	1" to 12"	1" to 6"	-	-	-	-	-

* For valves of sizes and pressure class other than shown in table, Please contact our sales representative.



Trunnion Mounted Ball Valve



Product Specifications



Product Type	Trunnion Mounted Ball Valve <ul style="list-style-type: none">• Side Entry / Top Entry• Full Bore / Reduced Bore• Cast / Forge• 2Pc / 3Pc Design• Bolted Body / Welded Body• Soft Seated / Metal Seated
Valve Size	2" to 48"
Pressure Class	150, 300, 600, 900, 1500, 2500
Ends	RF, RTJ, BWE
Operation	Lever, Gear, Actuator (Pneumatic, Hydraulic, Electrical)
Materials	Carbon Steel, Stainless Steel, Alloy Steel, DSS & SDSS
Design Features	<ul style="list-style-type: none">• Anti-Static Design• Anti-Blow out Stem• Double Block & Bleed• DIB-1 & DIB-2 Configuration• Self Relieving / Non-Relieving Seats• Drain & Vent Connections• Sealant Injection in Seats & Stem

Applicable Standards

Design Standard	API 6D, API 608, ISO 17292
P-T Rating	ASME B16.34
Face to Face	API 6D, ASME B16.10
End Connections	ASME B16.5, ASME B16.47, ASME B16.25
Testing	API 6D, API 598
Fire Safe	API 607, API 6FA, ISO 10497
NACE Requirement*	NACE MR-01-75, NACE MR-01-03
FET Testing*	ISO 15848
Cryo Test*	BS 6364

* On request.

INDUSTRIES

- Oil & Gas Industry
- Pipeline & Process Industry
- Power Industry
- Refinery & Petrochemical Industry
- Chemical Industry

- Full internal weld overlay or weld overlay on seat pocket area and body cavity can be provided.
- Fully welded ball valves can be provided eliminating the potential flange leak path.
- Stem extension can be provided upon customer requirement.
- Lip seals provided for low temperature services.
- ISO 5211 top mounting plate for direct mounting of a wide range of actuators and gears.





Product Specifications



Product Type	Floating Ball Valve <ul style="list-style-type: none">• Full Bore / Reduced Bore• Cast / Forge• 2Pc / 3Pc Design• Soft Seated / Metal Seated
Valve Size	1/2" to 6"
Pressure Class	150, 300, 600, 800, 900, 1500, 2500
Ends	RF, RTJ, BWE, SW, NPT
Operation	Lever, Gear, Actuator (Pneumatic, Hydraulic, Electrical)
Materials	Carbon Steel, Stainless Steel, Alloy Steel, DSS & SDSS
Design Features	<ul style="list-style-type: none">• Anti-Static Design• Anti-Blow out Stem• Cavity Pressure Relief Feature• Body Drain Connections*• Lever Locking Device*



Applicable Standards

Design Standard	API 6D, API 608, ISO 17292
P-T Rating	ASME B16.34
Face to Face	API 6D, ASME B16.10
End Connections	ASME B16.5, ASME B16.25, ASME B16.11, ASME B1.20.1
Testing	API 6D, API 598
Fire Safe	API 607, API 6FA, ISO 10497
NACE Requirement*	NACE MR-01-75, NACE MR-01-03
FET Testing*	ISO 15848
Cryo Test*	BS 6364

* On request.

INDUSTRIES

- Oil & Gas Industry
- Pipeline & Process Industry
- Power Industry
- Refinery & Petrochemical Industry
- Chemical Industry

- Stem extension can be provided upon customer requirement.
- ISO 5211 top mounting plate for direct mounting of a wide range of actuators and gears.





Product Specifications



Product Type	Forged Gate Valve <ul style="list-style-type: none">• Standard Bore / Regular Bore
Valve Size	½" to 2"
Pressure Class	150, 300, 600, 800, 900, 1500, 2500
Ends	RF, RTJ, BWE, SW, NPT
Operation	Manual Operated - Handwheel, Electrical Actuator
Materials	Carbon Steel, Stainless Steel, Alloy Steel, DSS & SDSS
Design Features	<ul style="list-style-type: none">• Bolted Bonnet / Welded Bonnet• Solid Wedge• OS&Y• Rising Stem• Welded & Renewable Seat Rings / Integral Seat Rings



Applicable Standards

Design Standard	API 602, ASME B16.34
P-T Rating	ASME B16.34
Face to Face	ASME B16.10, Manufacturer Standard
End Connections	ASME B16.5, ASME B16.25, ASME B16.11, ASME B1.20.1
Testing	API 598
NACE Requirement*	NACE MR-01-75, NACE MR-01-03
Cryo Test*	BS 6364

* On request.

INDUSTRIES

- Oil & Gas Industry
- Process Industry
- Power Industry
- Refinery & Petrochemical Industry
- Chemical Industry

- Bellows-Sealed Gate Valves available in Class 800.
- Screwed with seal-welded body-bonnet design for valves of Class 1500.





Product Specifications



Product Type	Forged Globe Valve <ul style="list-style-type: none">• Standard Bore / Regular Bore
Valve Size	½" to 2"
Pressure Class	150, 300, 600, 800, 900, 1500, 2500
Ends	RF, RTJ, BWE, SW, NPT
Operation	Manual Operated - Handwheel, Electrical Actuator
Materials	Carbon Steel, Stainless Steel, Alloy Steel, DSS & SDSS
Design Features	<ul style="list-style-type: none">• Bolted Bonnet / Welded Bonnet• Swivel Disc• OS&Y• Rising Handwheel

Applicable Standards



Design Standard	API 602, ASME B16.34
P-T Rating	ASME B16.34
Face to Face	ASME B16.10, Manufacturer Standard
End Connections	ASME B16.5, ASME B16.25, ASME B16.11, ASME B1.20.1
Testing	API 598
NACE Requirement*	NACE MR-01-75, NACE MR-01-03
Cryo Test*	BS 6364

* On request.

INDUSTRIES

- Oil & Gas Industry
- Process Industry
- Power Industry
- Refinery & Petrochemical Industry
- Chemical Industry

- Bellows-Sealed Globe Valves available in Class 800.
- Y-Pattern Globe Valves available in Class 1500 & 2500.
- Screwed with seal-welded body-bonnet design for valves of Class 1500.





Product Specifications

Product Type	Forged Check Valve <ul style="list-style-type: none">• Lift/Piston Type• Standard Bore / Regular Bore
Valve Size	½" to 2"
Pressure Class	150, 300, 600, 800, 900, 1500, 2500
Ends	RF, RTJ, BWE, SW, NPT
Materials	Carbon Steel, Stainless Steel, Alloy Steel, DSS & SDSS
Design Features	• Bolted Cover / Welded Cover

Applicable Standards

Design Standard	API 602, ASME B16.34
P-T Rating	ASME B16.34
Face to Face	ASME B16.10, Manufacturer Standard
End Connections	ASME B16.5, ASME B16.25, ASME B16.11
Testing	API 598
NACE Requirement*	NACE MR-01-75, NACE MR-01-03

* On request.



INDUSTRIES

- Oil & Gas Industry
- Process Industry
- Power Industry
- Refinery & Petrochemical Industry
- Chemical Industry

- Y-Pattern Check Valves available in Class 1500 & 2500.





Product Specifications



Product Type	Gate Valve <ul style="list-style-type: none">Standard Bore / Regular Bore
Valve Size	2" to 36"
Pressure Class	150, 300, 600, 900, 1500, 2500
Ends	RF, RTJ, BWE
Operation	Handwheel, Gear, Actuator (Pneumatic, Electrical)
Materials	Carbon Steel, Stainless Steel, Alloy Steel, DSS & SDSS
Design Features	<ul style="list-style-type: none">Bolted Bonnet / Pressure Seal BonnetSolid Wedge / Flexible Wedge / Parallel SlideOS&YRising StemRenewable SeatsBypass and Equalizing Arrangement



Applicable Standards

Design Standard	API 600, API 6D, ASME B16.34
P-T Rating	ASME B16.34
Face to Face	ASME B16.10
End Connections	ASME B16.5, ASME B16.47, ASME B16.25
Testing	API 598
NACE Requirement*	NACE MR-01-75, NACE MR-01-03
FET Testing*	API 624
Cryo Test*	BS 6364

* On request.

INDUSTRIES

- Oil & Gas Industry
- Process Industry
- Power Industry
- Refinery & Petrochemical Industry
- Chemical Industry

- ISO 5210 top mounting plate for direct mounting of a wide range of actuators and gears.





Product Specifications



Product Type	Globe Valve <ul style="list-style-type: none">Standard Bore / Regular Bore
Valve Size	2" to 16"
Pressure Class	150, 300, 600, 900, 1500, 2500
Ends	RF, RTJ, BWE
Operation	Handwheel, Gear, Actuator (Pneumatic, Electrical)
Materials	Carbon Steel, Stainless Steel, Alloy Steel, DSS & SDSS
Design Features	<ul style="list-style-type: none">Bolted BonnetSwivel Disc / Plug Type DiscOS&YRising Handwheel

Applicable Standards



Design Standard	API 623, BS 1873, ASME B16.34
P-T Rating	ASME B16.34
Face to Face	ASME B16.10
End Connections	ASME B16.5, ASME B16.25
Testing	API 598
NACE Requirement*	NACE MR-01-75, NACE MR-01-03
FET Testing*	API 624
Cryo Test*	BS 6364

* On request.

INDUSTRIES

- Oil & Gas Industry
- Process Industry
- Power Industry
- Refinery & Petrochemical Industry
- Chemical Industry

- ISO 5210 top mounting plate for direct mounting of a wide range of actuators and gears.





Product Specifications

Product Type	Swing Check Valve <ul style="list-style-type: none">Standard Bore / Regular Bore
Valve Size	2" to 24"
Pressure Class	150, 300, 600, 900, 1500, 2500
Ends	RF, RTJ, BWE
Materials	Carbon Steel, Stainless Steel, Alloy Steel, DSS & SDSS
Design Features	<ul style="list-style-type: none">Bolted CoverSwing DiscRenewable Seats

Applicable Standards

Design Standard	API 594, API 6D BS 1868, ASME B16.34
P-T Rating	ASME B16.34
Face to Face	ASME B16.10
End Connections	ASME B16.5, ASME B16.25
Testing	API 598
Fire Safe	API 6FA, API 6FD, ISO 10497
NACE Requirement*	NACE MR-01-75, NACE MR-01-03

* On request.



INDUSTRIES

- Oil & Gas Industry
- Process Industry
- Power Industry
- Refinery & Petrochemical Industry
- Chemical Industry
- Water & Waste water





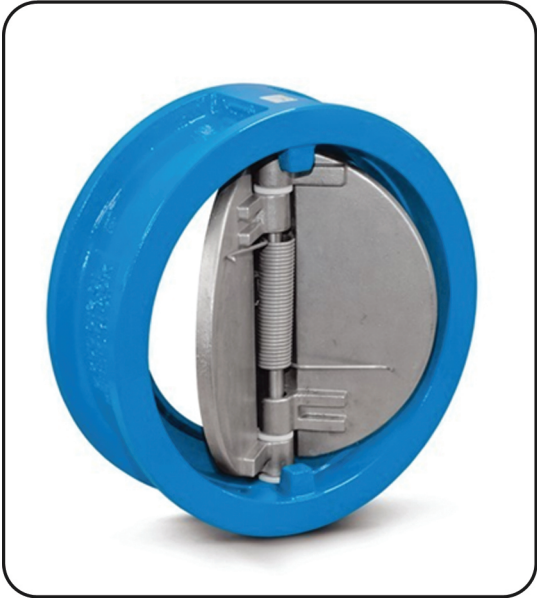
Product Specifications

Product Type	Dual Plate Check Valve
Valve Size	2" to 48"
Pressure Class	150, 300, 600, 900, 1500
Ends	Flanged / Wafer Type / Lug Type / BWE / Hub End
Materials	Carbon Steel, Stainless Steel, Alloy Steel, DSS & SDSS
Design Features	<ul style="list-style-type: none">• Retainerless Design• Double Spring action• Independent Plate Suspension• No Slamming

Applicable Standards

Design Standard	API 594, API 6D BS 1868, ASME B16.34
P-T Rating	ASME B16.34
Face to Face	ASME B16.10
End Connections	ASME B16.5, ASME B16.25
Testing	API 598
Fire Safe	API 6FA, API 6FD, ISO 10497
NACE Requirement*	NACE MR-01-75, NACE MR-01-03

* On request.



INDUSTRIES

- Oil & Gas Industry
- Process Industry
- Power Industry
- Refinery & Petrochemical Industry
- Chemical Industry
- Water & Waste water

- Applicable for Horizontal and Vertical installation in pipeline.



Double Offset Butterfly Valve



Product Specifications



Product Type	Double Offset Butterfly Valve
Valve Size	2" to 24"
Pressure Class	150, 300
Ends	Flanged / Wafer Type / Lug Type
Operation	Lever, Gear, Actuator (Pneumatic, Electrical)
Materials	Cast Iron, Carbon Steel, Stainless Steel, Alloy Steel
Design Features	<ul style="list-style-type: none">• Anti-Blow out Stem• Soft Seated / Metal Seated• Reduced Seat wear• Low operating torque

Applicable Standards



Design Standard	API 609, ASME B16.34
P-T Rating	ASME B16.34
Face to Face	API 609, ASME B16.10
End Connections	ASME B16.5
Testing	API 598
Fire Safe	API 607, ISO 10497
NACE Requirement*	NACE MR-01-75, NACE MR-01-03
FET Testing*	ISO 15848
Cryo Test*	BS 6364

* On request.

INDUSTRIES

- Oil & Gas Industry
- Pipeline & Process Industry
- Power Industry
- Refinery & Petrochemical Industry
- Chemical Industry • Water & Waste water Industry
- Pharmaceutical Industry • Marine Industry

- Stellite hard face on the disc sealing face can be provided upon request.
- Live loading can be provided, which maintain constant pressure on the gland.
- Low emission packing set available for special service.
- ISO 5211 top mounting plate for direct mounting of a wide range of actuators and gears.



Triple Offset Butterfly Valve



Product Specifications



Product Type	Trunnion Mounted Ball Valve <ul style="list-style-type: none">• Side Entry / Top Entry• Full Bore / Reduced Bore• Cast / Forge• 2Pc / 3Pc Design• Bolted Body / Welded Body• Soft Seated / Metal Seated
Valve Size	2" to 48"
Pressure Class	150, 300, 600, 900, 1500, 2500
Ends	RF, RTJ, BWE
Operation	Lever, Gear, Actuator (Pneumatic, Hydraulic, Electrical)
Materials	Carbon Steel, Stainless Steel, Alloy Steel, DSS & SDSS
Design Features	<ul style="list-style-type: none">• Anti-Static Design• Anti-Blow out Stem• Double Block & Bleed• DIB-1 & DIB-2 Configuration• Self Relieving / Non-Relieving Seats• Drain & Vent Connections• Sealant Injection in Seats & Stem

Applicable Standards

Design Standard	API 609, ASME B16.34
P-T Rating	ASME B16.34
Face to Face	API 609, ASME B16.10
End Connections	ASME B16.5
Testing	API 598
Fire Safe	API 607, ISO 10497
NACE Requirement*	NACE MR-01-75, NACE MR-01-03
FET Testing*	ISO 15848
Cryo Test*	BS 6364

* On request.

INDUSTRIES

- Oil & Gas Industry
- Pipeline & Process Industry
- Power Industry
- Refinery & Petrochemical Industry
- Chemical Industry

- Full internal weld overlay or weld overlay on seat pocket area and body cavity can be provided.
- Fully welded ball valves can be provided eliminating the potential flange leak path.
- Stem extension can be provided upon customer requirement.
- Lip seals provided for low temperature services.
- ISO 5211 top mounting plate for direct mounting of a wide range of actuators and gears.





Product Specifications



Product Type	Plug Valve • Soft Seated / Metal Seated
Valve Size	2" to 24"
Pressure Class	150, 300, 600
Ends	RF, RTJ, BWE
Operation	Lever, Gear, Actuator (Pneumatic, Hydraulic, Electrical)
Materials	Carbon Steel, Stainless Steel, Alloy Steel, DSS & SDSS
Design Features	• Taper Plug Design • Anti-Static Design • Anti-Blow out Stem • PTFE Sleeve Body • Drain & Vent Connections • Double Block & Bleed • Lower operating torque



Applicable Standards

Design Standard	API 6D, API 599
P-T Rating	ASME B16.34
Face to Face	API 6D, ASME B16.10
End Connections	ASME B16.5, ASME B16.25
Testing	API 6D, API 598
Fire Safe	API 607, API 6FA, ISO 10497
NACE Requirement*	NACE MR-01-75, NACE MR-01-03
FET Testing*	ISO 15848
Cryo Test*	BS 6364

* On request.

INDUSTRIES

- Oil & Gas Industry
- Refinery & Petrochemical Industry
- Power Industry
- Chemical Industry
- Water & Waste water Industry
- Pharmaceutical Industry
- Food & Beverage Industry
- Pulp & Paper Industry

- Double injector for lubrication can be provided on request.
- Low emission packing set available for special service.





Product Specifications



Product Type	Piston Valve
Valve Size	½" to 8"
Pressure Class	150, 300, 800
Ends	RF, RTJ, BWE, SW, NPT
Operation	Handwheel, Gear, Actuator (Pneumatic, Electrical)
Materials	Cast Iron, Ductile Iron, Carbon Steel, Stainless Steel
Design Features	<ul style="list-style-type: none">• Glandless Design• Large effective sealing area• Reinforced sealing rings and Belleville washers• Isolation and throttling applications• Balanced Piston

Applicable Standards



Design Standard	ASME B16.34, API 602
P-T Rating	ASME B16.34
Face to Face	ASME B16.10, Manufacturer Standard
End Connections	ASME B16.5, ASME B16.25, ASME B16.11, ASME B1.20.1
Testing	API 598
Fire Safe	ISO 10497

* On request.

INDUSTRIES

- Power Industry
- Refinery & Petrochemical Industry
- Chemical Industry
- Pharmaceutical Industry
- Pulp & Paper Industry
- Food & Beverage Industry



Knife Edge Gate Valve



Product Specifications



Product Type	Knife Edge Gate Valve
Valve Size	2" to 48"
Pressure Class	150, 300
Ends	Flanged / Wafer Type / Lug Type
Operation	Manual, Gear, Actuator (Pneumatic, Hydraulic, Electrical)
Materials	Cast Iron, Carbon Steel, Stainless Steel, Alloy Steel
Design Features	<ul style="list-style-type: none">• Bonnet / Bonnetless Design• Metal-Metal Seated & Metal-Soft Seated• Bi-directional & Uni-directional• Replaceable Seats• Low operating torque

Applicable Standards



Design Standard	ASME B16.34, MSS SP 81
P-T Rating	ASME B16.34
Face to Face	ASME B16.10, MSS SP 81
End Connections	ASME B16.5, ASME B16.47
Testing	API 598, MSS SP 151

* On request.

INDUSTRIES

- Water & Waste water Industry
- Pulp & Paper Industry
- Mineral & Metal Industry • Thermal Power Industry
- Chemical Industry • Petrochemical Industry
- Chain Pulley arrangement on request.
- Tear Gum Rubber Sleeve arrangement for slurry application.
- Sharp heavy-duty knife edge at the bottom of gate cuts through solid sediments and ensures reliable shut-off.
- Gate offered with surface coatings based on customer demand - Hardfacing, Nitriding, Chrome-plating etc.





Product Specifications



Product Type	Strainer • Y-Type Strainer • T-Type Strainer / Basket Type Strainer
Valve Size	1" to 12"
Pressure Class	150, 300
Ends	Flanged, BWE, SW, NPT
Materials	Cast Iron, Carbon Steel, Stainless Steel, Alloy Steel, DSS & SDSS
Design Features	<ul style="list-style-type: none">• Bolted Cover Design• Drain Plug & Lower Pressure Drop Design• Flat seated screen for proper seating• Low pressure drop across the filter• Compact size & low weight• Detachable mesh• Back Washing

Applicable Standards



Design Standard	ASME B16.34, Manufacturer Standard
P-T Rating	ASME B16.34
Face to Face	Manufacturer Standard
End Connections	ASME B16.5, ASME B16.25, ASME B16.11, ASME B1.20.1
Testing	API 598

* On request.

- For natural gas and oil companies, removing debris and other impurities during production is important. Because of this, strainers are vital to the process of natural gas and oil filtration.
- To ensure against the untimely shutdown of equipment, strainers should be installed ahead of pumps, loading valves, control valves, meters, steam traps, turbines, compressors, solenoid valves, nozzles, pressure regulators, burners, unit heaters, and other sensitive equipment.
- Rubber Lined, PTFE Lined, Jacketed, Magnetic Type Strainer can be done.
- Wire mesh from 2 mesh to 200 mesh (upto 80 micron).
- Drain arrangement can be provided on request.



Spare & Part Supplier



We are supplying spares of valve, actuator and accessories to suit all types of valves and valve make.

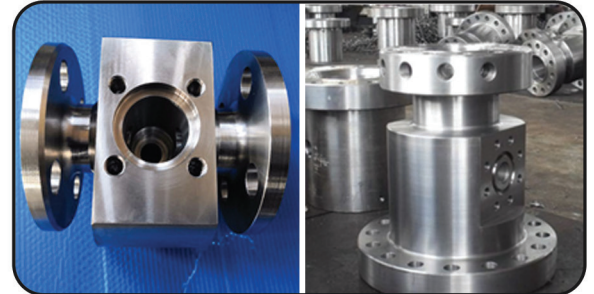
With over 20 years of experience in valve industry, we can offer the world class quality, best prices and fastest delivery. We work to give you a quick response with technical & commercial inputs to provide you with the best solutions.

The spares & parts offered by us, are categorized as below :

Machined Parts | Castings / Forgings | Seals | Fasteners | Actuator & Accessories

MACHINED PARTS :

- We supply all kinds of machined parts for any type of valve.
- Body / Trims / Bonnet / Stem / Flanges / Mountings etc.



CASTINGS / FORGINGS :

- We supply all kinds of castings and forgings for any type of valve.
- Castings : Sand Casting / Investment Casting / Lost Foam Casting.
- Forgings : Close Die / Open Die Forging.



SEALS :

- We supply all types of seals for valves.
- O-Rings / Gaskets / Packings / Lipseals etc.



FASTENERS :

- We supply all types of fasteners for valves in all sizes.
- Stud / Bolt / Nut / Screws / Coated Fasteners etc



ACTUATOR & ACCESSORIES :



Refurbishment & Repair of Valves



We have vast experience in refurbishing & repairing of all types of industrial valves from every industry such as Oil & Gas, Refinery, Petrochemical, Chemical Process and other similar installations.

All valves and its parts are inspected at our workshops before we start our work. A complete inspection report along with actual photos is prepared for initial assessment of cost, repairing and time period.

All repairing and reconditioning is carried out as per the initial assessment report and its solutions in a control way.

We can repair most valve make, types, sizes and different rating using our highly skilled Engineers and Technicians.

By Repairing, we can save up to 60% to 70% of the cost of a new valve and delivery can be done within 10 – 15 days or as per agreement. Thereby, it can ideal during plant shutdown and maintenance.

All Valves are disassembled, cleaned and inspected to check whether they are in tolerance so that It can be used in the valve again. However, if it is not then, we can replace the component with a new one. 3D Models / 2D drawings are prepared for the same.

Flange serration are check and inspected for any damage and repair or machining is done, if required. Wedge / Seat / Disc / Ball are machined (if required) and then lapped to ensure a perfect seal as per the customer leakage requirements. All soft parts such as packing and gaskets are replaced with new parts so that leakage is not there.

Valves are assembled by highly trained technicians. Hydro testing is done to check body leakage and seat leakage test is done to check for any internal leakage as per international standards or as per customer requirements. Painting can be provided as per customer requirements.

Testing report is generated with all the details along with satisfactory test results. Our Quality engineer puts his sign and stamp of the company as approval.



Instrumentation Valves & Fittings



We are also a leading manufacturer of Instrumentation Valves & Fittings.
A short list of our products are as below :

INSTRUMENTATION VALVES

- Needle Valves
- Manifold valves
- Ball valves
- Double block & Bleed Valves
- Check valves
- Gauge valves

TUBE FITTINGS

- Connector
 - Male connector
 - O ring Male connector
 - Female connector
 - Bulkhead female connector
 - Bulkhead male connector
 - Port Connector
 - Reducing Port Connector
 - Male Weld Connector
- Elbow
 - Union Elbow
 - Swivel Elbow
 - Bulkhead elbow
 - Male Elbow
 - 45 deg. Male Elbow
 - Positionable Male Elbow
 - Female Elbow
 - Tube weld Elbow
- Tee
 - Union Tee
 - Male run tee
 - Positionable Male run tee
 - Positionable branch tee
 - Female run tee
 - Female Branch tee
 - Reducing union tee
 - Male Branch tee
- Union
 - Union
 - Reducing union
 - Bulkhead Union
 - Union Cross
- Adapter
 - Male adapter
 - Female adapter
 - O ring Male adapter
- Others
 - Front Ferrule
 - Back Ferrule
 - Coupling Cap
 - Fitting end closure
 - Tube Cap
 - Tube Plug
 - Reducer
 - Bulk head reducer

PIPE FITTING

- Nipple
 - Hex Nipple
 - Hex reducing nipple
 - Hex long nipple
- Coupling
 - Hex coupling
 - Reducing coupling
- Adaptor
 - Adaptor
 - Reducing adaptor
 - Gauge Adaptor
- Elbow
 - Female Elbow
 - Male Elbow
 - Street Elbow
 - Reducing street elbow
- Tee
 - Female Tee
 - Male Tee
 - Street run tee
 - Branch tee
- Others
 - Pipe cap
 - Reducing bushing
 - Pipe plug
 - Female Cross
- Pipe Accessories
 - Condensate pot
 - Air header
 - Siphon
 - Gauge cock
- Flanges
 - Raised Face Flange
 - RTJ Flange
 - Weld Neck Flange
 - Blind Flange
 - Slip On Flange



Application in Industries



Our valves are used by various industries worldwide to keep their operating facility running smoothly.



OIL & GAS



REFINERY & PETROCHEMICAL



PIPELINE & PROCESS



OFFSHORE



POWER



LNG & CRYOGENICS



PULP & PAPER



PHARMACEUTICAL



FOOD & BEVERAGE



**WATER & WASTE
WATER**



MINING



MARINE





Follow us at :



For more details, Contact at :

☎ +91 9930568025
✉ sales@maffsvalves.com
🌐 www.maffsvalves.com

CORPORATE & FACTORY :

Gala No. 9, Building No. 3, Patel Industrial Estate, Gokhivare,
Range Office, Vasai East, Palghar - 401208

