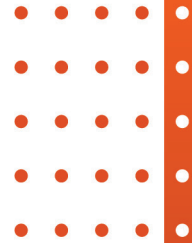
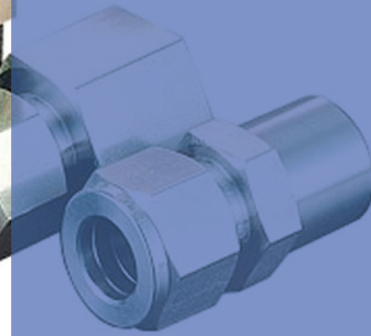




Pipe Fittings



MAFFS VALVES & FITTINGS PVT LTD

Manufacturer of Industrial Valves, Instrumentation Valves & Fittings



CONDENSATE POT :

The application of the condensate pot is to hold condensate and foreign material from the line. It helps to keep the line clean and free of any unwanted material or slug. It is usually located on the instrument's upstream side and has a drain arrangement to remove any foreign material. Available in materials such as carbon Steel, SS304, SS316, etc.

Typical industry applications are in power plants, refineries, petrochemicals, chemicals, steel plants etc. It is used to allow a liquid seal between the instrument and flowing steam. It can be installed vertical or horizontal as per requirements between the impulse lines and the instruments.



Features :

It is used as liquid or condensate traps, seal pot, and vapor chambers. Chambers are made from seamless pipe and weld caps. Welding is done as per ASME section IX guidelines. All BW joints are 100% RT and Filled Weld are DP tested. All threads are protected with dead plugs.

Specifications :

Pipe size of 2" to 6" is available, larger sizes on request.

Length of 8" to 12" is available, larger lengths on request.

Design working pressure - 6000 psig.

It is available for sour service as per NACE MR 01 75.

Chamber as per ISA RP3, NPT as per ANSI B2.1, SW as per ANSI B16.11 & BW as per ANSI B16.9.

AIR HEADER :

Air header are used for distribution of air to valves, pumps, systems etc.

It is available in different material such as SS304, SS304L, SS316, SS316L, Hastelloy C, Monel, Inconel, Titanium, Carbon Steel in Pipe and bar stock type.

sizes of 1" to 2" sch 40 to 160.

4, 6, 8, 12 & 16 way outlet port.

inlet connection and port connection as per customer requirements.





SIPHON :

It is used to protect instruments, gauges, switches & transmitter from high temperature fluid. It reduce process pulsation and provide cooling effect to save the instrument.

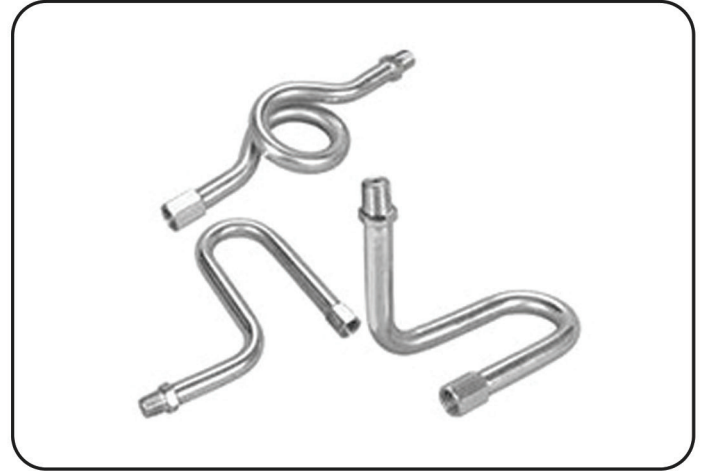
Type - Coil, U & Pigtail shapes.

Max temp of 400°C & pressure of 160 barg.

Pipe size is 1/2" Sch 40.

It is available in different material such as SS304, SS316, SS304L, SS316L, Hastelloy C, Monel, Inconel etc.

It is available in NPT, BSP & BSPT connection with male, female end connection as required by the customer.



GAUGE COCK :

Instrumentation isolation valve used for shut off the flow of air to the pressure instrument.

Sizes - 1/4" to 1/2".

Material SS304 & SS316.

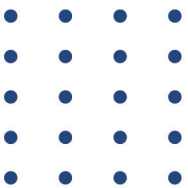
2 way & 3 way design.

End connection is NPT & BSP.





Follow us at :



For more details, Contact at :

- +91 9930568025
- sales@maffsvalves.com
- www.maffsvalves.com

CORPORATE & FACTORY :

Gala No. 9, Building No. 3, Patel Industrial Estate, Gokhivare,
Range Office, Vasai East, Palghar - 401208